

October 2014

## Two Directors Elected at Annual Meeting

At last month's annual meeting, NOVEC customers re-elected two incumbents to the board of directors — Manley Garber in district 7 representing Dale City and northern Montclair, and Cynthia Gilbride in district 1, representing Fairfax County north of Centreville, and the South Riding area of Loudoun County. Garber and Gilbride were elected to serve four-year terms.



Manley Garber



Cynthia Gilbride

Also at annual meeting, Board Chairman Wade House reported that in 2013, NOVEC added more renewable energy to its supply portfolio in the past year, returned more than \$4 million in CashBack to members, and had “an incredible” 99.99 percent reliability rate.

## All NOVEC Offices Will be Closed

**November 11: Veterans Day**

**November 27-28: Thanksgiving**

To report power outages, call 703-335-0500 or 1-888-335-0500 24 hours a day, seven days a week.

## Heat up Winter



Heat up your winter by choosing NOVEC Energy Solutions as your natural gas provider. NES pricing allows homeowners to enjoy the same deals that large businesses receive.

Lock-in a low natural gas rate today before winter rates increase.



Learn more at [www.novecenergysolutions.com](http://www.novecenergysolutions.com) | [nes@novec.com](mailto:nes@novec.com) | 1-888-627-SAVE (7283)  
NOVEC is an equal opportunity provider and employer.

## Need Help Staying Warm this Winter?



The Virginia Department of Social Services has several programs to assist eligible households with home heating expenses.

### Fuel Assistance

The Fuel Assistance program is designed to help with home heating costs, but can also be used for furnace re-starts, connection or re-connection fees, and various incidental charges. This year, the VDSS will accept applications from Oct. 14 through Nov. 8.

### One-Time Crisis Assistance

Crisis Assistance is another state program that can help meet a household's emergency heating need when fuel assistance or other resources cannot meet the need. Local departments of social services accept applications for Crisis Assistance from Nov. 1 through March 15, for the following needs: one-time-only heat security deposit; portable space heater for temporary use; payment for emergency shelter; and/or heating equipment repair or purchase. In addition, local departments of social services accept applications from the first workday in January through March 15 for the following types of one-time crisis assistance: purchase of home heating fuel and payment of heat utility bill. Assistance is always based on the availability of funds.

### For More Information

Eligibility requirements and application forms for both programs are available online at [www.dss.virginia.gov/benefit/ea/](http://www.dss.virginia.gov/benefit/ea/).

## PCA Credit Means Savings For Customers

Customers are continuing to receive monthly power cost adjustment credits on their electric bills. This credit of more than half a cent per kilowatt-hour is applied to every kWh purchased.

The PCA credit is the direct result of improved operating efficiencies and the NOVEC power supply team's procurement of energy at favorable rates. As an owner of the business, when the Co-op saves on power costs, you benefit. That's something we call “The Cooperative Difference!”



# Mechanical Tree Trimming in Rural Areas

To help expedite tree trimming along our rural right-of-way areas, contractors from Lewis Tree Service are now using a mechanical tree trimmer. Over the next year or so, this machine will be operating along several hundred miles of rural lines from Dumfries in Prince William County to Stafford County. Rural rights-of-way are those areas that are not landscaped or mowed.

Using this mechanical trimmer allows crews to work at four to five times the efficiency of crews using traditional equipment. Well maintained right-of-way areas provide crews with easy access to power lines for more timely and efficient line repairs and inspection.

For more information, contact NOVEC's customer service center at 703-335-0500 or 1-888-335-0500, or send an email by visiting [www.novec.com](http://www.novec.com) and selecting "Contact Us."

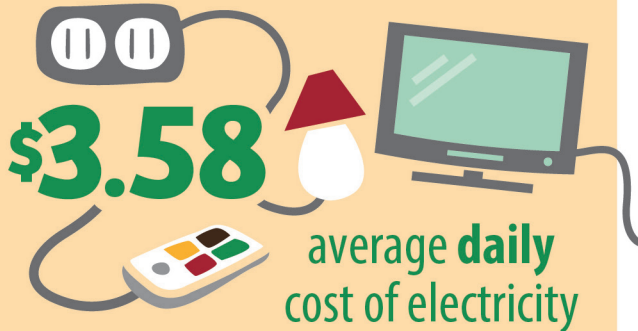
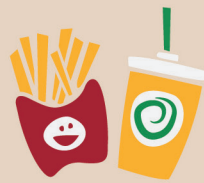


This mechanical tree trimmer will be working in rural areas to keep NOVEC's right-of-way areas clear for easy access during repair and maintenance work.

## THE VALUE OF *Electricity*



average cost of a Big Mac meal



average daily cost of electricity

Electricity is expressed on a daily basis using EIA 2012 Average U.S. Monthly Residential Bill of \$107

## October is National Cooperative Month

National Cooperative Month is the perfect opportunity to bring your attention to the great bargain you receive as a NOVEC customer. As illustrated above, you receive a day's worth of power for less than the cost of a fast food lunch.

## Weather Strip to Seal Drafts

The chilly October air will soon give way to cold, winter weather. Not only is now the ideal time to ensure your heating system is in good operating condition, but also to check your home for air leaks where that heat may be escaping.

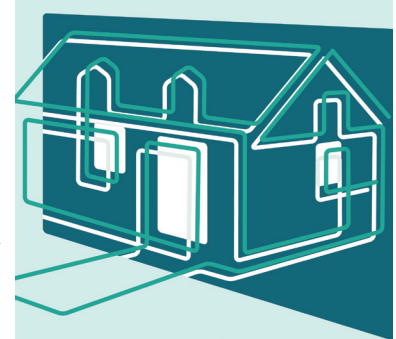
When a home is drafty, with cold air coming in through improperly sealed windows and doors, most people will immediately want to raise their thermostat. However, that will cause you to use more energy when you don't necessarily need to. The best solution is to weather strip your home. This is typically an easy fix that will eliminate energy waste and help you save on your monthly electric bill. Weather stripping is easy to install, and an assortment of inexpensive materials is available.

Drafts are sometimes obvious, but other times the openings are much smaller. Here are two quick ways to detect drafts.

**Doors:** look for daylight between the door and its frame. If you see even a hint of light in between the two, you need to install weather stripping.

**Windows:** place a piece of paper between the sash and the seal, then close it. If you can remove the piece of paper from the window without ripping it, you need to install weather stripping.

About half of the energy your home uses comes from heating and cooling. So the next time you feel a chilly draft in your home, do not crank up the heat. Check to find out where the draft is coming from and then properly weather strip the area. This will ultimately save you energy and money, and keep your home warm and cozy through the winter.



Source: Department of Energy  
\*For more weather stripping options, visit <http://energy.gov/energysaver/articles/weatherstripping>



## TODAY'S FORECAST: RELIABLE SERVICE

Through planning, maintenance, and responsiveness, NOVEC has led the Washington, D.C., metro area in reliability for the **past 14 years and counting.**



NOVEC is an equal opportunity provider and employer.



For additional information or to submit suggestions for future articles, contact: NOVEC Public Relations, P.O. Box 2710, Manassas, Va 20108 or email: [pknight@novec.com](mailto:pknight@novec.com).

NOVEC is an equal opportunity provider and employer.

[www.novec.com](http://www.novec.com)