

## Biomass Plant Now in Operation

NOVEC, and its development partner, NOVI Energy, officially opened the NOVEC Energy Production Halifax County Biomass plant in South Boston, Va., on Nov. 14, 2013. The \$178 million renewable-energy power plant, which can generate up to 49.9 megawatts of electricity, burns wood chips for fuel.

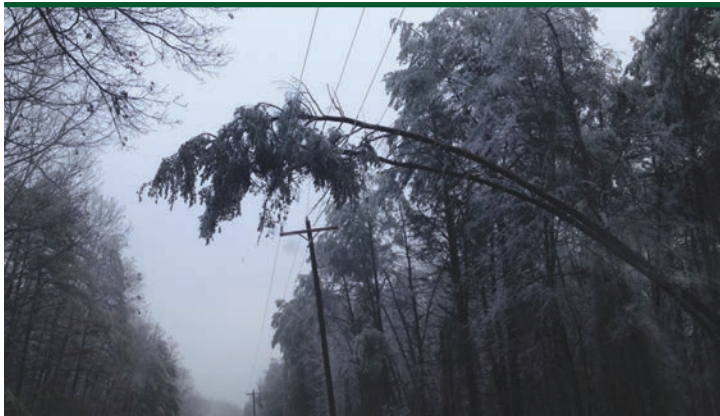
The plant is capable of providing enough electricity to power the equivalent of 16,000 NOVEC homes. All of the Cooperative's 153,000 customer-owners will benefit from the "green" power distribution.

For more information about the Halifax County biomass plant, visit [www.novec.com/biomass-plant](http://www.novec.com/biomass-plant).



**Above:** Night shot of the wood chip conveyor at the new power plant.

**Left:** With benefits to NOVEC customer-owners, the economic base of Halifax County, and the environment, the biomass plant offers a powerful resource for a new generation.



## Pines and Power Lines = Potential Problems

caused property damage — falling on cars, homes, and fences. White pines, Virginia pines, Loblolly pines, Leyland cypress, and Green Giant arborvitae are just some examples of evergreens that don't do well in snow and ice. Please don't plant any of these tree types near NOVEC overhead power lines.


NOVEC staff and contractors evaluate the condition of trees within and along the edges of our easements on a year-round basis. When possible, all potentially damage-causing trees are removed before they can fall on power lines. NOVEC does not own the trees within our easements, but has the legal right to remove any trees deemed hazardous, as well as those that are within the Cooperative's easement area. In addition, NOVEC will remove any trees that block access to Cooperative equipment. This removal process is essential to help us provide safe, reliable electric service to all NOVEC customers.

For more information, contact NOVEC's vegetation management staff at [rightofway@novec.com](mailto:rightofway@novec.com).

**T**rees are a wonderful natural addition to almost any landscape. When planted in the right place, they provide shade and add aesthetic beauty to your property. However, when planted too close to power lines, some trees can cause problems.

The winter ice storm in early December was a reminder that many types of trees should not be planted near overhead power lines. Thousands of customers lost power due to weak trees and limbs falling onto power lines. These same types of trees also blocked roadways and

## Good News! PCA Will Remain a Credit on NOVEC Bills in 2014



For the third consecutive year, NOVEC customers will receive a credit adjustment for every kilowatt-hour they purchase in 2014. NOVEC filed with the Virginia State Corporation Commission for a credit adjustment of 1.1 cents per kilowatt-hour and expects the Commission's approval of the filed amount.

The PCA credit is the direct result of favorable energy market conditions that have allowed the NOVEC power-supply team to purchase energy at lower prices than in previous years. Coupled with a 4.5 percent rate reduction in 2011, NOVEC customers are paying about 14.5 percent less for energy than they were in 2009, when NOVEC assumed power-supply responsibility.

# New Year's Energy-Saving Resolutions

When making New Year's resolutions, be sure to include energy-efficiency changes to save money and energy. To achieve significant daily savings, implement these energy-saving measures in your home:

⇒ Check your home's thermostat for accuracy with a reliable thermometer. For the best balance between comfort and energy efficiency, NOVEC recommends maintaining a temperature of 78 F for air conditioning and 68 for heating.

⇒ Insulate hot water pipes, especially if they are located in unheated spaces.

⇒ Set your water heater temperature to 120 F. Turn off the electric water heater or set a gas water heater on "vacation" when you are away from home for more than a few days.

⇒ Install water-saving showerheads and other conservation devices.

⇒ Check the air filters on your heating and cooling system monthly. Clean (if reusable) or replace as necessary.



⇒ Use compact fluorescent light bulbs wherever practical. They will provide equivalent lighting while using 75 percent less energy and will typically last 15 percent longer than incandescent light bulbs.

⇒ Set your refrigerator thermostat at 38-40 F and the freezer compartment at 0-5 F. Be sure to clean the coils with a vacuum cleaner or brush at least twice a year.

⇒ When doing laundry, do not overload the washing machine or dryer. It uses more energy and the operation of the appliance is hindered. Remember to clean the lint filters after each dryer cycle. Check to ensure the exhaust vent of the dryer is not clogged; otherwise it will impede drying, reduce efficiency, and possibly become a fire hazard.

## FOR MORE INFORMATION

For more energy-saving tips, or to find specific seasonal energy saving suggestions for both winter and summer, visit NOVEC's web site at [www.novec.com/useitwisely2](http://www.novec.com/useitwisely2).

## Feel the Need for Some Internet Speed?



NOVECnet, a new NOVEC Energy Solutions service, provides lightning-fast Internet to rural Virginia. All NOVECnet plans provide up to 12 megabytes per second!



For more information, visit [www.novecnet.com](http://www.novecnet.com) or call 1-866-511-9005



## Apply Online for NOVEC Scholarship

The Cooperative is accepting applications for the NOVEC Scholarship Program from now through March 18, 2014. High school seniors in Fairfax, Fauquier, Loudoun, Prince William, and Stafford counties, and in The City of Manassas Park -- where NOVEC provides electric service -- may apply for \$1,500 scholarships. Since the majority of Co-op customers live in Prince William, Fairfax, and Loudoun counties, selection committees will award scholarships to two public school students in each of these counties. The committees will also award a single \$1,500 scholarship to a home-schooled or private school student. In addition, the overall top student will receive the \$1,500 Garber Scholarship.

This year, **all scholarship applications must be submitted online.** Visit [www.novec.com](http://www.novec.com) to complete the application.

## Holiday Office Closing Presidents' Day Monday, Feb. 17

To report outages,  
call 703-335-0500 or  
toll-free 1-888-335-0500.