

Think Safety! Prevent Electrical Fires



Did you know two-thirds of all electrical fires begin with the power cord or appliance plugs?

According to the National Fire Protection Association, every year U.S. fire departments respond to nearly 50,000 reported home structure fires involving electrical failure or malfunction every year.

To ensure your family is safe, take the following steps to prevent electrical fires in your home:

- Replace or repair damaged or loose electrical cords.
- Avoid running extension cords across doorways or under carpets.
- In homes with small children, make sure your home has tamper-resistant (TR) receptacles.
- Consider having additional circuits or outlets added by a qualified electrician so you do not have to use extension cords.
- Follow the manufacturer's instructions for plugging an appliance into a receptacle outlet.
- Avoid overloading outlets. Plug only one high-wattage appliance into each receptacle outlet at a time.
- If outlets or switches feel warm, fuses blow, circuits trip frequently, or lights flicker or dim, call a qualified electrician.
- Place lamps on level surfaces, away from things that can burn, and use bulbs that match the lamp's recommended wattage.
- Make sure your home has ground fault circuit interrupters (GFCIs) in the kitchen, bathroom(s), laundry, basement, and outdoor areas.
- Arc-fault circuit interrupters (AFCIs) should be installed in your home to protect electrical outlets.



NOVEC Empowers Members with New Energy Advisor™ Tool

These days, we use the internet to track everything from the number of steps we've taken to online banking to locating a parked car. Now you can easily track where your energy dollars are going with the new Energy Advisor tool, available on NOVEC's website. The tool provides home energy use calculations, helpful tips, and precise cost savings estimates designed to help members spend smarter on energy.

In just a few clicks on a computer, tablet, or smartphone, the Energy Advisor application analyzes energy use and areas for improvement. First, a quick survey gathers customer information about their home's location, size, construction, and energy systems. Combining these inputs with local weather and current energy prices, Energy Advisor instantly

produces an accurate, detailed breakdown of annual energy use. With recommendations for energy-efficiency upgrades, customers can immediately start taking low-cost or no-cost actions to save money on their utility bills.

Integrated with the energy bill, the Energy Advisor tool gives a personalized energy-use analysis with intuitive, interactive bar charts showing at a glance the relative amounts of energy required by the home's heating and air conditioning, water heating, cooking, refrigeration, appliances, lighting, and even pools and spas. Members can explore use and cost comparisons across months and even years to see how changing weather, use patterns, and home occupancy have affected their wallets.



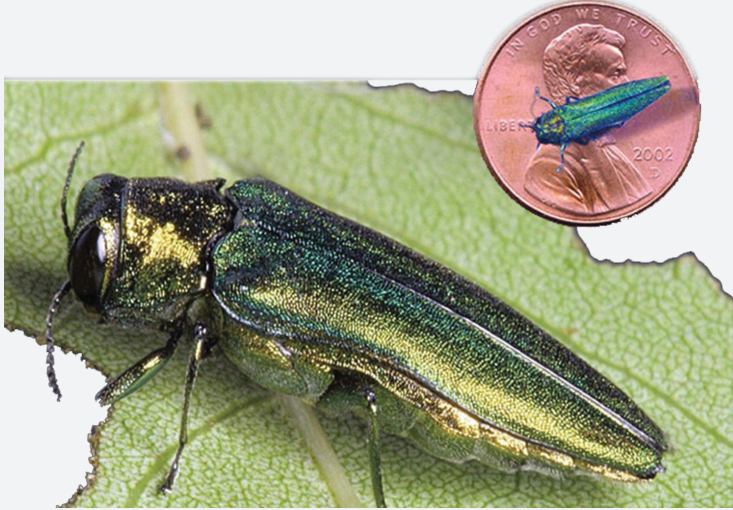
TODAY'S FORECAST: INCREASED CHANCE OF SAVINGS

Sign up for NOVEC's **Load Management Program** and help hold down power costs. Participants have already helped save more than \$25 million over the past decade. NOVEC passes savings on to customers through the power-cost-adjustment on monthly bills. Join today at www.novec.com/loadmanagement or call 703-335-0500.

Because lower bills brighten everyone's day.



Emerald Ash Borer Means Thousands of Dead Trees



The arrival of an ash tree-destroying insect a few years ago has resulted in a dramatic increase in the number of dead or dying ash trees in the NOVEC service territory. The dead trees pose a potential hazard to Co-op power lines and equipment, as well as to homes, property, and people.

The Emerald Ash Borer typically kills ash trees completely in three years from the initial infestation. There is a 100 percent mortality rate for ash trees that have not been treated with an appropriate pesticide. Because the borer interferes with the trees' ability to transport water, dead ash trees are extremely dry, brittle and structurally unpredictable.

The Emerald Ash Borer is an invasive flying insect native to Asia and has no natural enemies in the United States. Accidentally introduced to Michigan in 2002, the borer has spread across the Midwest and eastern United States, killing millions of urban and rural ash trees.

NOVEC has more than 2000 miles of overhead power lines that help deliver electricity to our more than 162,000 customers-owners. Tree trimming crews from Lewis Tree maintain safe clearances between growing tree limbs and power

lines. Maintenance crews clear all brush and tree limbs every three and a half years within NOVEC's 30-foot-wide easements to maintain a clear, safe utility space. During these tree-trimming operations, dead or dying ash trees are being increasingly encountered.

NOVEC will continue to maintain the rights of way and remove limbs and cut down whole trees, as needed, to help assure the continued safety and reliability of the electric system. Large stands of dead ash trees in wooded areas adjacent to NOVEC's rights of way will be dropped into the woods, or cut short enough so they can't cause power outages.

We urge our customers to be aware that while many of the dead and dying ash trees may not be close enough to cause damage to power lines, they may be close enough to homes and property to cause damage. There are measures however, that you can take that may prevent the demise of your ash trees. **For more information, visit www.emeraldashborer.info.**



Wash Away a Stressful Day

with help from a NOVEC Solutions energy-efficient **water heater**.

Don't wait until your old water heater starts to leak!
Contact NOVEC Solutions for a competitively priced, energy-efficient gas or electric water heater.

Learn more at www.novec.com/ns, email novecsolutions@novec.com, or call toll free 1-888-335-0500.

\$50 off on all water heaters
Offer expires 10-31-16

MARATHON WATER HEATERS
Limited Lifetime Warranty
Now in STOCK!

NOVEC
Solutions
Technology for everyday life

NOVEC is an equal opportunity provider and employer.

For additional information or to submit suggestions for future articles, contact: NOVEC Public Relations, P.O. Box 2710, Manassas, Va 20108 or email: communications@novec.com.