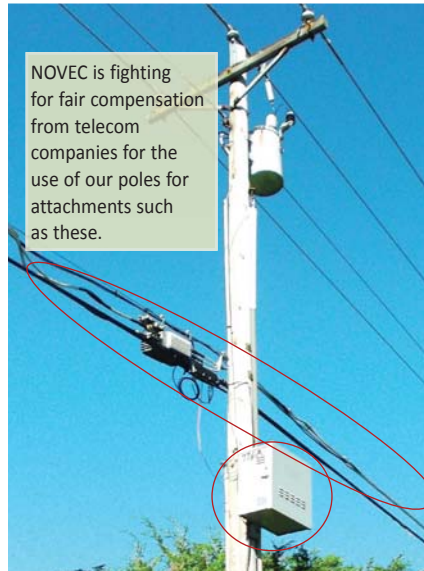


Working Toward Fair Compensation for Pole Attachments

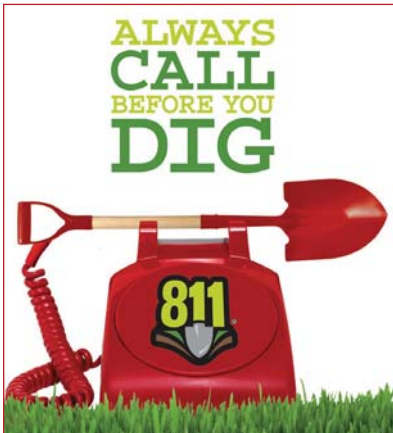
We never forget that NOVEC is a customer-owned business. We operate the company in a manner that protects your ownership interest. A good example is our ongoing effort to ensure that telecom companies using our infrastructure to deliver their services pay a fee that recovers the true costs associated with that use. While we support broadband expansion in underserved portions of our service area, we do not believe Co-op members should be required to subsidize such expansion.

In 2014 the Virginia State Corporation Commission issued a favorable ruling in our contract dispute with Comcast.



Despite the SCC's ruling, we found ourselves working to defeat yet another "pole attachment bill" during the 2015 General Assembly session. Thanks in major part to our efforts, Delegate Randy Minchew, the bill's sponsor, "laid the bill on the table," meaning it did not get out of the Energy Subcommittee.

We believe that the deployment of high-speed broadband to the sparsely populated portions of our service area, as well as to all of rural Virginia, would be beneficial. NOVEC stands ready to review relevant business plans to see how we may assist startup entrepreneurs who want to bring high-speed telecom services to the rural portions of our service territory — as long as NOVEC's customer-owners are not asked to subsidize the effort.



Call 811 Before You Dig — *It's the Law*

With spring in full force, you may be looking for the perfect spot to plant a shade tree on the southern or western side of your house to block the sun's heat. Shade trees save energy dollars and provide comfort, but before you grab a shovel, call 811—also known as Miss Utility—at least 48 hours

before you dig. It's the law. The same rule applies for any major planting or construction project, such as a deck, patio, or fence.

Some utility equipment may be buried at a shallow depth. An unintended shovel thrust can cause a dangerous and/or costly

consequence. You don't want to be responsible for disrupting utility service for your entire neighborhood. But more importantly, you don't want to be shocked or electrocuted from cutting an underground power cable or causing a gas leak!

By making one call to 811 all your utility companies will be notified. This includes NOVEC, as well as natural gas, phone, fiber optic, cable, water, and sewer providers. These companies will send locators to your property to mark underground lines, pipes, and cables.

After the utilities mark underground facilities, you will know their approximate location and can start digging. Be sure to dig at least 5-feet from the marks, away from the utilities' easements.

To avoid injury, damage, or a monetary fine, always Call 811 Before You Dig! For more information, visit www.call811.com or www.missutilityofvirginia.com.

Congratulations to Mr. and Mrs. Adolfo Chavarria of South Riding.

They won this quarter's new customer survey drawing, and received a \$25 Lowe's gift card.



Wash Away a Stressful Day

with help from a NOVEC Solutions energy-efficient water heater.

Don't wait until your old water heater starts to leak!
Contact NOVEC Solutions for a competitively priced,
energy-efficient gas or electric water heater.

Learn more at www.novec.com/ns, email novecsolutions@novec.com, or call toll free 1-888-335-0500.

*Offer expires 06/30/2015.

\$50 OFF

Any water heater purchase!*



NOVEC is an equal opportunity provider and employer.

Home Suite Home



NOVEC's **HomeEnergySuite** has the information and tools to **lower your energy costs.**

Find more information at www.novec.com/homeenergysuite



NOVEC is an equal opportunity provider and employer.

A "Healthy-Looking" Tree May Pose Potential Outage Threat

The NOVEC electric distribution system has nearly 2,000 miles of high-voltage overhead power lines and hundreds of miles of low-voltage service wires. These lines are clearly visible along streets, in the woods, and across fields throughout our service territory. In any of these locations, there is a high probability that a tree tall enough to fall on the lines is somewhere in the vicinity.



This oak tree, with undetected rot in the trunk, fell and destroyed power lines and poles.

Fortunately, most trees along our power lines are healthy and present no hazard of falling during normal weather conditions. These trees may require routine trimming away from the wires, but otherwise they will live a healthy life. However, dead or diseased trees are an obvious hazard to our power lines and are routinely removed by tree contractors. Although these trees appear healthy from a distance, upon closer examination there may be subtle signs of structural issues with the trunk or roots that could cause the tree to fail. Many of these trees are 50 feet or farther away from power lines and outside NOVEC easements, but they are tall enough to hit the lines if they fall. These trees cause a large number of outages since they are difficult to identify. Once we locate a tree such as this, it is either cut down, or trimmed to make it too short to contact overhead lines.

If you have a tree on your property that is tall enough to fall on power lines and appears to possibly be unstable, please contact us for an evaluation. You can contact the right-of-way department at 703-392-1661 or 1-888-335-0500, ext. 1661, or via email: rightofway@novec.com.

Holiday Office Closing Memorial Day: Monday, May 25

To report outages, call 703-335-0500
or
toll-free 1-888-335-0500.



Easy Summer Energy Savers

Keep cool this summer and save on energy bills by following these simple tips around the house.

Check your HVAC system filter every month. If it looks dirty, change it. At a minimum, change the filter every three months. A dirty filter wastes energy by slowing air flow, causing the system to work harder to keep the house cool.

Use the microwave or grill instead of the conventional oven. The indoor stove or oven can raise your kitchen's temperature as much as 5 to 10 degrees.

Close blinds or drapes to block sunlight. Direct sunlight can raise the temperature of a room by 10 to 20 degrees.

Use portable or ceiling fans to cool your home. Run ceiling fans counterclockwise. Even mild air movement can make you feel 3 to 4 degrees cooler.

Turn the thermostat up to 78 for optimal savings. Each degree below 78 increases energy use by 3 to 5 percent.

Use a programmable thermostat to turn the air conditioner up or down based on when family members are home.

For More Information visit www.novec.com/save.



For additional information or to submit suggestions for future articles, contact: NOVEC Public Relations, P.O. Box 2710, Manassas, Va 20108 or email: pknight@novec.com. NOVEC is an equal opportunity provider and employer.

www.novec.com

