

Putting safety first this month — and throughout the year



May is National Electrical Safety Month!

Electrical safety is always a top priority for NOVEC. However, every May, the Co-op and the Electrical Safety Foundation Institute take additional time to promote the importance of electrical safety in recognition of National Electrical Safety Month.

According to EFSI, unsafe practices around electricity cause more than 140,000 fires each year, resulting in more than 500 deaths, 4,000 injuries and 1.6 billion in property damage.

To prevent these tragedies, education is the key to understanding electrical safety all year long. NOVEC offers the following tips to help identify and eliminate electrical hazards to protect yourself, your family, and your home:

- Test ground fault circuit interrupters (GFCIs) and any arc fault circuit interrupters (AFCIs).
- Inspect electrical appliance cords for damage.
- Make sure entertainment centers and computer equipment have plenty of ventilation.
- Use extension cords as a temporary solution, and never as a permanent power supply.
- Use a surge protector to protect your computer and other electronic equipment from damage caused by voltage changes.
- Clean or replace furnace/air conditioner filters frequently — according to manufacturers' recommendations.
- Vacuum refrigerator coils if you can reach them.
- Thoroughly clean lint out of the dryer and the vent pipe.
- Clean air conditioners or schedule an annual inspection.
- Schedule an annual furnace cleaning and inspection.

For more information and safety tips, visit www.novec.com/safety.

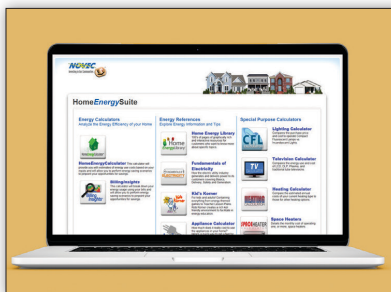
What can you do with 1 kWh this summer?

Kilowatt-hours (kWh) are on your electric bill every month, but do you know what you can do with 1 kWh?

- ★ Blend 200 smoothies
- ★ Microwave 21 frozen burritos
- ★ Trim 3 miles of weeds
- ★ Make 60 quarts of ice cream
- ★ Keep cool with 20 hours of a ceiling fan
- ★ Binge watch 3 hours of television on a plasma TV or 6 hours on an LCD TV
- ★ Blow-dry 20 heads of hair
- ★ Toast 160 slices of bread

► **Congratulations!**

Ms. Vilma Saravia of Centreville won this quarter's new customer survey drawing and received a \$25 Lowe's gift card.



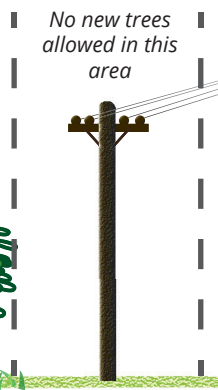
Home Suite Home

NOVEC's *HomeEnergySuite* has the information and tools to lower your energy costs.

Find more information at www.novec.com/homeenergysuite



Right of way: NOVEC's landscaping standards



30-foot wide right of way

Tall Trees (50 feet):

- Maple
- Oak
- Spruce
- Pine

Medium Trees (40 feet):

- Bradford Pear
- Crab Apple

Small Trees (20 feet):

- Redbud
- Dogwood

NOVEC's overhead and underground utility lines carry potentially deadly electric current, therefore it is very important to understand landscaping requirements around these lines and their supporting facilities. Because improper landscaping is a major cause of power outages and added maintenance expense, our right-of-way department staff strives to find and eliminate situations which may lead to tree/line conflicts. Easements

attached to the property over which NOVEC lines pass allow NOVEC to remove or trim plant material as necessary to provide a safe, reliable, and cost-effective electric-distribution system to its customers.

For more information, visit www.novec.com/landscapingstandards



Call 811 before you dig

With spring in full bloom, you may be planning to plant new trees or shrubs for your yard. Planting a shade tree on the southern or western side of your house will help block the sun's

heat and therefore help you save energy dollars and be more comfortable.

Before you grab a shovel, call 811 — also known as Miss Utility — at least 48 hours before you dig. It's the law. The same law applies for major construction projects, including decks, patios, and fences.

Your call will be routed to a local One Call Center. Tell the operator where you're planning to dig and what type of work you'll be doing. The center will notify the utility companies that serve you, including NOVEC, and your natural gas, phone, fiber-optic, cable, water, and sewer providers. These companies will send locators to your property to mark underground lines, pipes, and cables. Afterward, you will know their approximate location and can start shoveling. Be sure to dig at least five feet from the mark, to stay away from utility easements.

For more information, visit www.call811.com or www.missutilityofvirginia.com.

Holiday Office Closure

Memorial Day — Monday, May 30 ▶ To report outages, call 703-335-0500 or 1-888-335-0500, 24 hours a day, seven days a week.



Wash Away a Stressful Day

with help from a NOVEC Solutions energy-efficient water heater.

Don't wait until your old water heater starts to leak!
Contact NOVEC Solutions for a competitively priced, energy-efficient gas or electric water heater.

Learn more at www.novec.com/ns, email novecsolutions@novec.com, or call toll free 1-888-335-0500.

MARATHON WATER HEATERS
Limited Lifetime Warranty
Now in STOCK!

NOVEC
Solutions
Technology for everyday life

NOVEC is an equal opportunity provider and employer.

For additional information or to submit suggestions for future articles, contact: NOVEC Public Relations, P.O. Box 2710, Manassas, Va 20108 or email: communications@novec.com.